

Auer Rod-Like Inclusions in Reactive Plasma Cells in a Case of Acute Myeloid Leukemia

Akut Miyeloid Lösemili Bir Olguda Reaktif Plazma Hücresinde Auer-Rod Benzeri İnküzyonlar

Sarita Pradhan

Institute of Medical Sciences and Sum Hospital, Laboratory of Hematology, Bhubaneswar, India

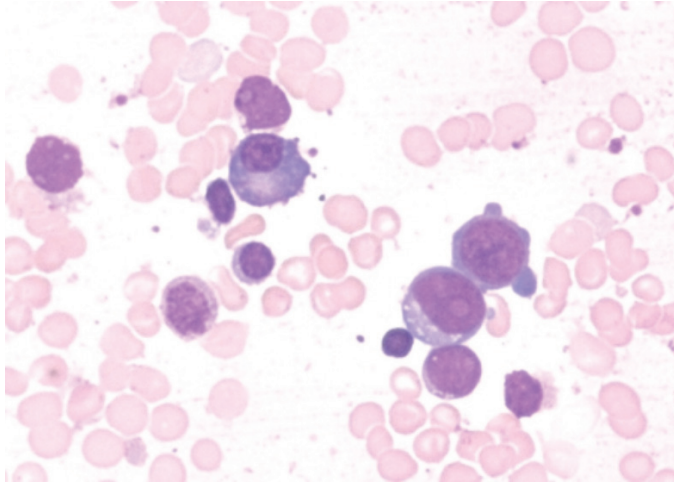


Figure 1. Myeloblasts and plasma cells containing Auer rod-like inclusions.

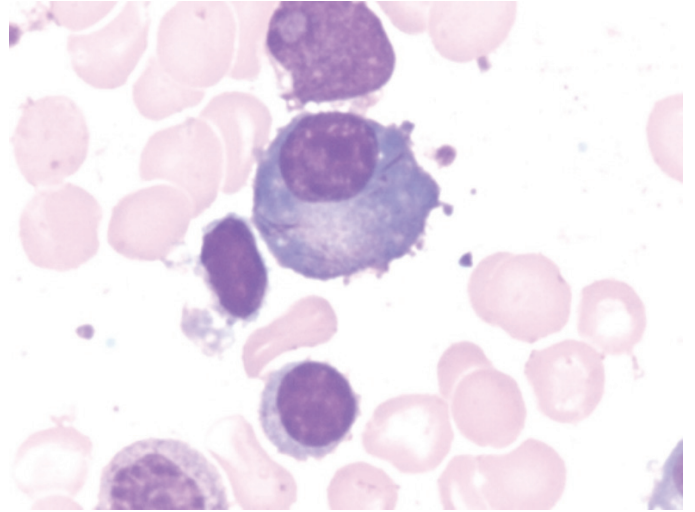


Figure 2. Plasma cell showing Auer rod-like inclusions.

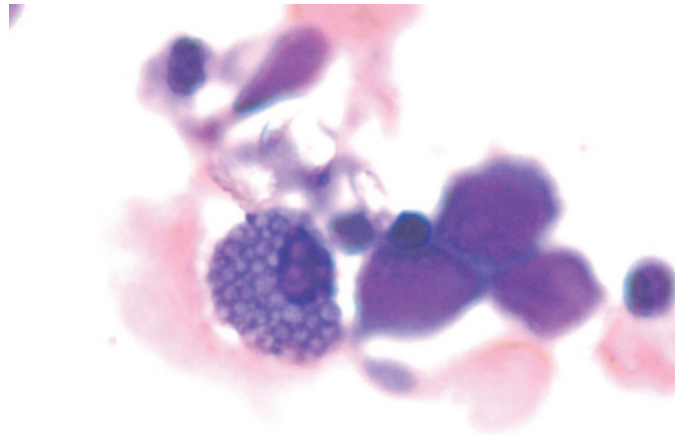


Figure 3. A Mott cell.



A 61-year-old female presented with decreasing hemoglobin for the past 6 months. She had a history of multiple transfusions in the recent past. Laboratory investigations showed hemoglobin of 8.6 g/dL, total blood leukocyte count of $1.13 \times 10^9/L$, and platelets of $80 \times 10^9/L$ with the presence of occasional circulating blasts. Bone marrow examination revealed the presence of 63% myeloblasts with prominent Auer rods and mild reactive plasmacytosis (6%). Some of the plasma cells showed Auer rod-like thin slender inclusions (Figures 1, 2, and 3). She was diagnosed with acute myeloid leukemia. Serum protein electrophoresis was done, which showed a normal pattern.

Presence of Auer rod-like inclusions has been described in rare cases of multiple myeloma [1,2], but Auer rod-like inclusions in reactive plasma cells in a case of acute myeloid leukemia have not been reported in the literature. The reported patients either had IgA kappa myeloma or IgG myeloma. Rare cases of Auer rod-like inclusions in aplastic anemia have been reported [3]. However, the exact nature of these inclusions needs to be studied further.

Keywords: Auer rods, Acute myeloid leukemia, Plasma cells

Anahtar Sözcükler: Auer cismi, Akut miyeloid lösemi, Plazma hücreleri

Conflict of Interest: The author of this paper has no conflicts of interest, including specific financial interests, relationships, and/or affiliations relevant to the subject matter or materials included.

References

1. Parmentier S, Radke J. Pseudo Auer rods in a patient with newly diagnosed IgG myeloma. *Blood* 2012;119:650.
2. Hütter G, Nowak D, Blau IW, Thiel E. Auer rod like intracytoplasmic inclusions in multiple myeloma. A case report and review of literature. *Int J Lab Hematol* 2009;31:236-240.
3. Lemez P. Auer rod-like inclusions in cells of B-lymphocytic lineage. *Acta Haematol* 1988;80:177-178.