

The Effect of Chlorhexidine and Dimethyl Sulfoxide on Long-Term Microleakage of Two Different Sealers in Root Canals

 R.M. LINDBLAD,  L.V.J. LASSILA,  P.K. VALLITTU,  L. TJÄDERHANE

ABSTRACT

Objective: The aim of root canal obturation is to prevent leakage and inhibit microbial invasion. This study aimed to determine the effect of chlorhexidine (CHX) and dimethyl sulfoxide (DMSO) as final irrigants on microleakage of root filling immediately and after 18 months. The hypothesis was that either CHX or DMSO would not affect the immediate or long-term microleakage.

Methods: A total of 120 human third molar root canals were obturated with RealSeal SE or Topseal and gutta percha. Before obturation, the canals were irrigated with saline (control), 2% CHX or 5% DMSO. Microleakage of half of each groups (n=10) was measured after 3 days, and of the other half was measured after 18 months with fluid filtration method.

Results: In immediate measurements, RealSeal SE performed significantly better in CHX-irrigated group (p=0.035; Mann-Whitney test). For both sealers, DMSO had the lowest mean microleakage values, which were also statistically significantly lower than with CHX irrigation within sealers (p<0.009 for Topseal and p=0.04 for RealSeal SE; Mann-Whitney test). With RealSeal SE, the microleakage with CHX was significantly higher than that in controls (p=0.022; Mann-Whitney test).

Conclusion: Neither final irrigant showed statistically significant differences in the immediate microleakage within the two sealers. Irrigation with DMSO caused significantly less microleakage than CHX for both sealers after 18 months.

Keywords: Adhesion, chlorhexidine, dimethyl sulfoxide, microleakage, root canal sealers

HIGHLIGHTS

- Irrigation with DMSO caused significantly less microleakage than CHX for both sealers after 18 months.
- Neither final irrigant showed statistically significant differences in the immediate microleakage within the two sealers.
- Even though the leakage was small, 97% of the obturations had at least some leakage regardless of the final irrigant used. Material development should concentrate even more to improve the consistency and tightness of the obturation.

INTRODUCTION

An effective coronal seal after root canal treatment is critical in prevention of oral bacteria to cause re-infection in the root canal (1). The sealer and its sealing ability play an important role in the prevention of microleakage of the endodontic filling. The quality of the seal depends on sealer's ability to consistently fill the space between the obturation material (e.g., gutta percha) and root canal, but also to fill root canal aberrancies and to penetrate into the lateral canals and dentinal tubules (2-4). Dimensional changes of sealers have also considerable relevance to the sealing ability. Even 1% shrinkage can produce a gap of 1 µm that makes it possible for micro-organisms to occupy and penetrate (5).

Epoxyl resin-based sealer materials, such as Topseal (Denstply Sirona, Ballaigues, Switzerland), are assumed to bond with covalent bonds between their epoxide rings and the exposed amino groups in the collagen network (6), and thereby the longevity of the adhesion and optimal seal depends at least partly on the preservation of collagen network (7). Methacrylate-based sealer materials, for example RealSeal (SybronEndo, Glendora, Canada), act like dental adhesives. These materials depend on micro-mechanical interlocking with the collagen matrix for retention (8).

The irrigation solutions may influence the adhesion to radicular dentin. Sodium hypochlorite (NaOCl) as a final irrigant has a negative influence on bonding when epoxy resin-based sealer is

Please cite this article as:
Lindblad RM, Lassila LVJ, Vallittu PK, Tjäderhane L. The Effect of Chlorhexidine and Dimethyl Sulfoxide on Long-Term Microleakage of Two Different Sealers in Root Canals. *Eur Endod J* 2019; 4: 38-44

From the Department of Oral and Maxillofacial Diseases (R.M.L. ✉ ritva.lindblad@pp.inet.fi, L.T.), University of Helsinki, Helsinki, Finland; Department of Biomaterials Science and Turku Clinical Biomaterials Centre-TCBC (L.V.J.L., P.K.V.), Institute of Dentistry, University of Turku, Turku, Finland; City of Turku, Welfare Division (P.K.V.); Research Unit of Oral Health Sciences (L.T.), and Medical Research Center Oulu (MRC Oulu), Oulu University Hospital and University of Oulu, Oulu, Finland

Received 01 December 2018, last revision received 14 December 2018, accepted 14 December 2018

Published online: 05 February 2019
DOI 10.14744/ej.2018.02886

used (9). Chlorhexidine (CHX) has been suggested as an irrigant in endodontic treatment because of its good antimicrobial properties and adhesion into root canal dentin (substantivity) (10-12). CHX also decreases the activity of collagenolytic enzymes, matrix metalloproteinases (MMPs) in radicular dentin (13, 14), and by that could preserve the collagen network that resin-based sealers are possibly bonding to. Numerous studies have shown CHX to be beneficial for long-term adhesive-dentin bond with composite fillings (15, 16), and it may at least moderately improve the immediate (17) and long-term (18-20) root canal post adhesion to root dentin. However, the information of the immediate and long-term effect of CHX on microleakage of resin-based endodontic filling materials is scarce (21, 22).

Dimethyl sulfoxide (DMSO) is a solvent that has long history in industry and pharmacology (23). It has been used as a penetration enhancer for medical subjects since 1960 (23). DMSO delivers both hydrophilic and lipophilic medications through skin (23). In human medication up to 50% DMSO concentrations, and in veterinary medicine as high as 90% concentrations are used (23). To date, DMSO has been very little studied in dental applications. However, recent studies suggest that DMSO improves both immediate and long-term adhesive bond strength in dentin (24, 25). The increase in immediate bond strength may relate to DMSO's ability to reduce dentin surface free energy, and improve wettability (26) and adhesive penetration (27). The preservation of bond strength durability may at least partially be due to inhibition of MMPs by DMSO (27).

To date, removing smear layer with ethylenediaminetetraacetic acid (EDTA) as final irrigant has been accepted to im-

prove the seal (28), while the effect of other irrigants frequently used after EDTA, such as CHX or CHX-based irrigants, have not been extensively studied. DMSO's effect on sealability has not been examined at all. Therefore, the aim of this study was to determine the effect of CHX and DMSO as final irrigant on microleakage of root canal obturation with two different sealers immediately and after 18 months. The hypothesis was that neither CHX nor DMSO would affect the immediate or long-term microleakage with any sealer.

MATERIALS AND METHODS

A total of 120 human third molars extracted as a part of normal treatment in the University Student Health Care Centre in Tampere and Oulu, Finland, were used for the study with the patients' consent and approval from the Ethical Committee, Faculty of Medicine, University of Oulu. Teeth were stored in 0.2% sodium azide at 4°C until used. Only molars with one straight separate root were selected. Crowns were removed at the cemento-enamel junction, and the selected root was separated with a diamond disk. The length of the roots was adjusted to 9-10 mm. The study protocol is presented in Figure 1. Root canals were prepared with Profile rotary NiTi-instruments (Dentsply Maillefer, Ballaigues, Switzerland) to size 40/0.04. Apical 1 mm was left unprepared to prevent apical extrusion of irrigants and sealer. Between each file size, the roots were irrigated with 3% NaOCl (ChlorCid, Ultradent, Salt Lake City, UT, USA). After the preparation, the canals were irrigated with 2 ml of 3% NaOCl followed by 2 ml of 18% EDTA (Ultradent) to remove the smear layer. The roots were randomly divided to three groups (40 roots for each group). Before obturation, the canals of the experimental groups were irrigated either with sterile saline (control), 2% CHX (Consepsis, Ultradent) or

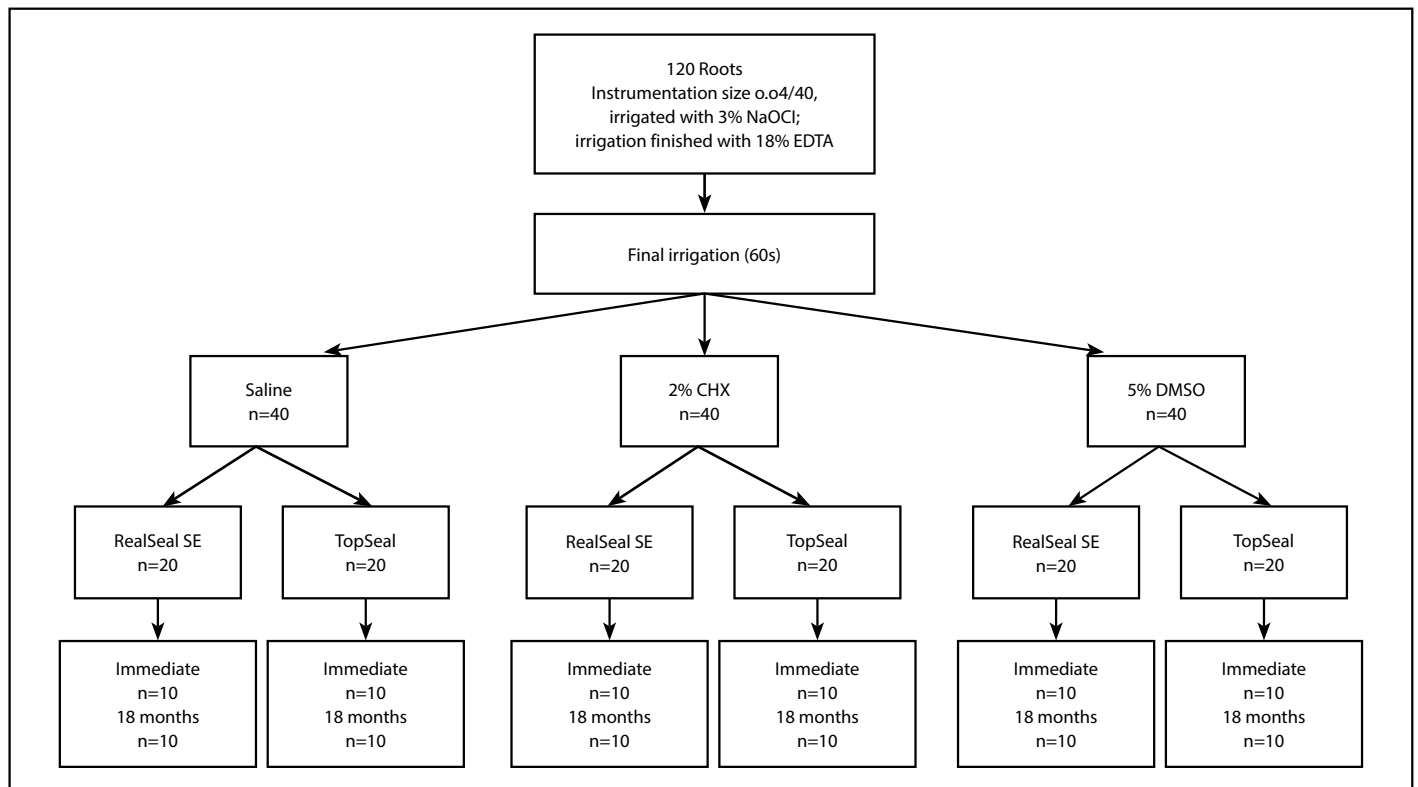


Figure 1. The flow chart describing the study protocol

TABLE 1. The materials used in the study

	Composition	Delivery/mixture	Instructions for use
RealSeal	Uretane dimethacrylate (UDMA), polyethylene glycol dimethacrylate (PEGDMA), ethoxylated bisphenol-A dimethacrylate (EBPADMA), bisphenol glycidyl dimethacrylate (BISGMA), barium borosilicate glass, barium sulfate, silica, calcium hydroxide, bismuth oxychloride with amines.	Paste/paste automix	Dry canal with paper points, apply with cones, light cure 40 s
Topseal	Component A: bisphenol-A-diglycidyl ether, bisphenol-F epoxy resin, calcium tungstate, iron oxide, ZrO ₂ , silica Component B: adamantine amine, dibenzyl diamines, tricyclodecane-diamine, calcium tungstate, ZrO ₂ , silica, silicon oil.	Paste/paste automix	Dry canal with paper points. Apply sealer into canal with automix syringe and with the cone
Artificial saliva	0.7 mmol/l CaCl ₂ *2H ₂ O, 0.2 mmol/l MgCl ₂ *6H ₂ O, 4.0 mmol/l KH ₂ PO ₄ , 20 mmol/l Hepes buffer, 0.02% Na-azide to prevent microbial growth.		

with 5% DMSO (Sigma-Aldrich, St Louis, MO, USA) for 60 s, and then dried with paper points. The roots were further randomly divided into two groups (20 in each). The first group was obturated using RealSeal SE with RealSeal points and Accessory points M (SybronEndo). The second group was obturated using Topseal with gutta percha points and gutta percha auxiliary points C (Dentsply Sirona). The obturations were performed using lateral condensation technique with one master point and 1-3 accessory points according to each manufacturer's protocols (Table 1). The roots were stored in artificial saliva in 37°C (Table 1) for 3 days to allow complete setting of the sealers. The roots that were aged for 18 months were equally stored in artificial saliva in 37°C for 18 months. Artificial saliva was used to ensure the presence of Ca²⁺- and Zn²⁺-ions required for the function of dentin endogenous enzymes (29). Artificial saliva has been frequently used when studying the durability of the adhesive hybrid layers (30). The microleakage of half (n=10) of each group was measured after 3 days, and of the other half was measured after 18 months with fluid filtration method (Flodec, De Marco Engineering, Geneva, Switzerland).

Fluid filtration test

Microleakage was measured using a fluid filtration method as described by Bouillaguet et al. (31) (Fig. 2). The apical part of the root was glued with cyanoacrylate glue (Flex Gel, LOCTITE Super Glue, Henkel, Düsseldorf, Germany) into a silicone tube connected to the device recording the fluid flow (Flodec). The tube was filled with distilled water under constant hydrostatic pressure of 10 psi (6.89 kPa) (32, 33). The system was tested before every measurement session with one negative control root (covered with three layers of nail varnish) to ensure the proper function of the equipment. If any tube leakage occurred (observed as extremely strong leakage) during the testing, the measurement was stopped, the leaks were sealed, and the measurement was repeated. The water pressure was

applied to each root for 30 min and the fluid flow was recorded constantly with 3 s time interval (Fig. 2).

Statistical analysis

Repeated-measures ANOVA, using immediate and 18-month leakage values as within-subject factors, and final irrigant (saline, CHX, and DMSO) and sealers (Topseal and RealSeal SE) as between-subject factors, was first performed. Because time together with irrigant in within-subject tests (time*irrigant, $p < 0.029$) and both irrigant ($p = 0.002$) and sealer ($p < 0.001$) in between-subject tests showed statistically significant effect, and because Kolmogorov-Smirnov and Shapiro-Wilk tests demonstrated that all groups did not follow the normal distribution, non-parametric methods were chosen for comparison between the groups. Kruskal-Wallis and Mann-Whitney tests were used to analyze the significance of the differences in microleakage between the groups at each time point. Wilcoxon signed ranks test was used to analyze the significance of the differences between the immediate and 18-month-aged samples within the groups. Statistical analyzes were performed with SPSS 22.0 for Windows (SPSS Inc., Chicago, IL, USA).

RESULTS

Negative control did not show leakage in any testing period. When the effect of irrigant regardless of the sealer was analyzed, saline had the highest immediate leakage rate that was significantly higher than that with DMSO ($p = 0.032$; Mann-Whitney test). However, the 18-month leakage was significantly lower than the immediate leakage ($p = 0.027$; related-samples Wilcoxon signed ranks test). Since DMSO had a similar low rate of leakage at both time points, 18-month saline controls did not differ from the respective DMSO samples (Fig. 2a). CHX immediate values did not differ from the other irrigants, and no change was observed when the immediate and 18-month CHX samples were compared. However, the 18-month leakage with CHX

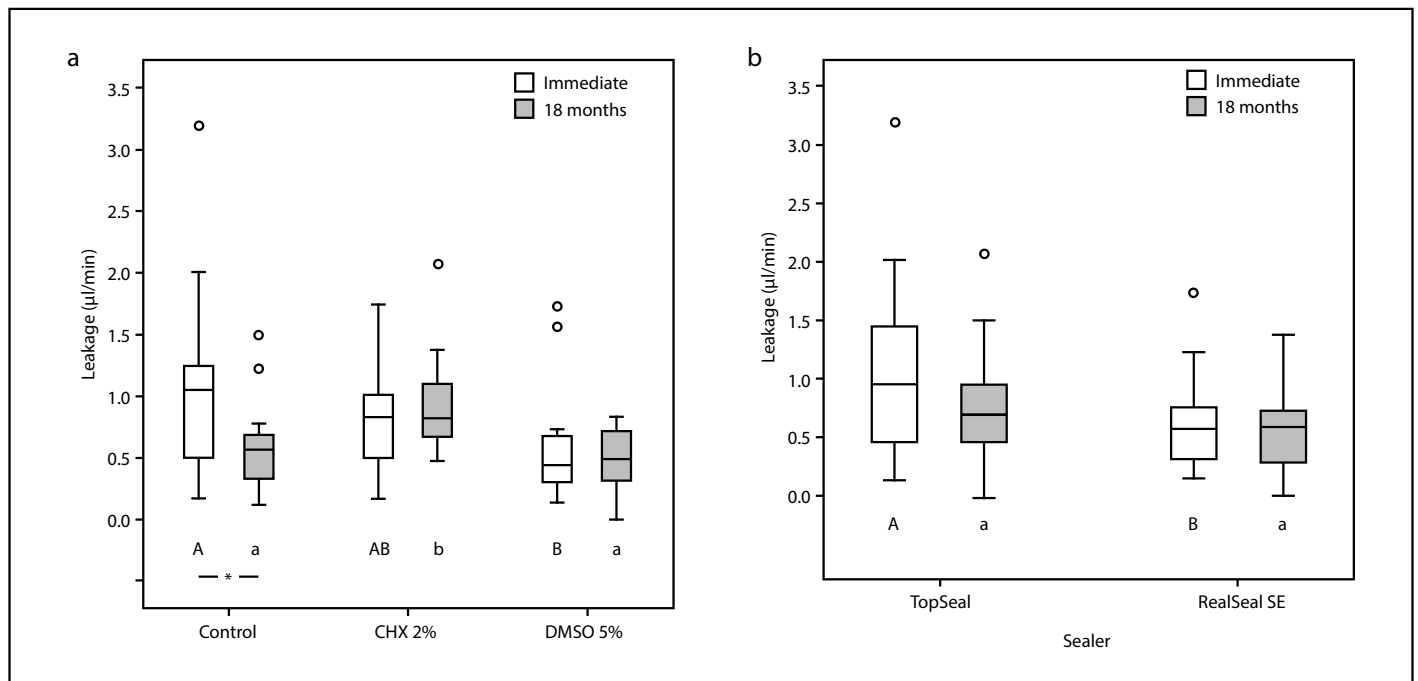


Figure 2. (a) The effect of irrigant regardless of the sealer on the microleakage. Upper and lower case letters indicate the statistically significant difference between the irrigants at the immediate and 18-month measurements, respectively. (b) The effect of the sealer regardless of the final irrigant. The letters indicating the statistical significance are the same as in Figure 2a. The circles indicate extreme values identified by the statistical program

TABLE 2. Microleakage (ml/30 min) of the samples. The group mean values with different superscript letter demonstrate statistically significant differences within each time point

		Mean	SD	Immediate Median	Min	Max	95% CI of mean
RealSeal	Control	724.5 ^{AB}	384.7	798.1	152.0	1222.7	428.8; 1020.2
	CHX	647.3 ^A	464.6	544.4	162.0	1734.5	290.1; 1004.4
	DMSO	448.0 ^A	180.5	405.4	243.5	718.3	309.2; 586.8
TopSeal	Control	1316.7 ^B	879.5	1183.6	185.8	3191.7	687.0; 1945.9
	CHX	1080.3 ^B	300.5	961.2	773.2	1686.8	802.4; 1358.1
	DMSO	687.3 ^{AB}	571.9	471.0	140.9	1717.5	244.7; 1126.9
		Mean	SD	18 months Median	Min	Max	95% CI of mean
RealSeal	Control	460.8 ^A	215.1	565.1	233.2	746.3	295.5; 626.1
	CHX	747.4 ^{BC}	264.1	723.3	475.9	1369.9	544.4; 950.5
	DMSO	403.6 ^A	309.0	348.5	0.0	823.2	166.1; 641.1
TopSeal	Control	665.2 ^{ABC}	411.4	575.0	102.7	1491.7	370.9; 959.6
	CHX	1173.5 ^C	440.9	996.1	762.1	2069.8	765.7; 1581.3
	DMSO	526.3 ^{AB}	251.7	559.5	6.9	789.7	332.9; 719.8

was significantly higher than with saline or DMSO ($p=0.002$ and $p=0.001$, respectively; Mann-Whitney test) (Fig. 2a).

There was no statistically significant difference in leakage between the sealers either immediately or after 18 months (Fig. 2b).

Effect of irrigants within the sealers

Next, the effects of irrigants and sealers were analyzed together. In immediate testing, even though RealSeal SE in general performed better than Topseal in all groups, the difference between the sealers was statistically significant only in CHX-irrigated group ($p=0.035$; Mann-Whitney test)

(Table 2; Fig. 3a). DMSO irrigation produced the lowest mean microleakage for both sealers, followed by CHX and control groups. However, within sealers, the differences were not statistically significant.

When 18-month-aged groups' microleakage was compared to the immediate values, no statistically significant differences were found (Table 2).

After 18 months aging, there were no statistically significant differences between the two sealers within any irrigation group (Table 2; Fig. 3b). For both sealers, DMSO had the lowest mean microleakage values, which were also statistically signif-

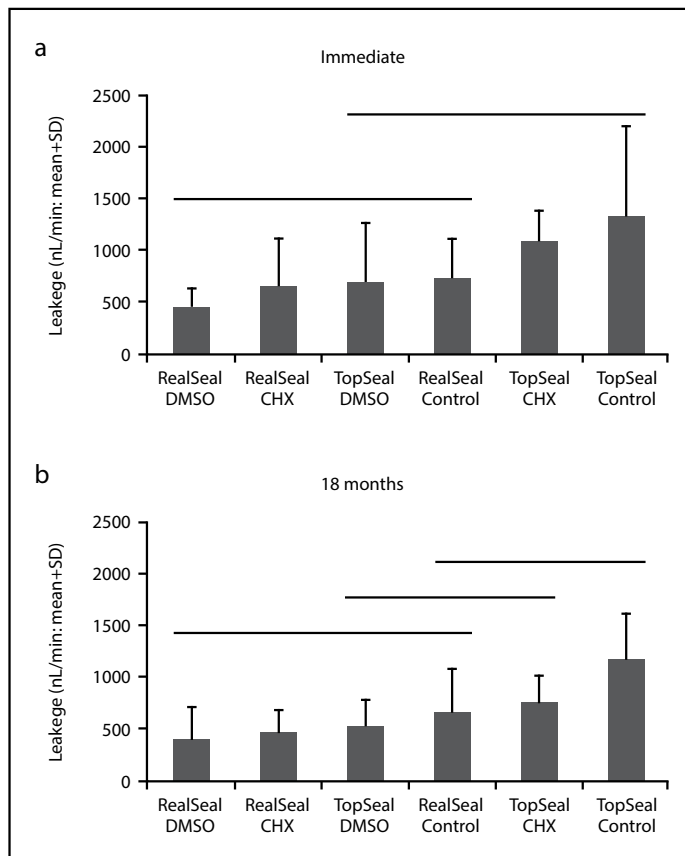


Figure 3. The immediate (a) and 18-month aged (b) microleakage for each group, presented in ascending order. The bars connected with horizontal lines did not show statistically significant differences

icantly lower than with CHX irrigation within sealers ($p < 0.009$ for Topseal and $p = 0.04$ for RealSeal SE; Mann-Whitney test). Two RealSeal SE samples had practically no leakage at all (less than 0.01 nl/min). For both sealers, final irrigation with CHX had the highest microleakage scores, and with RealSeal SE, the microleakage with CHX was significantly higher than that in controls ($p = 0.022$; Mann-Whitney test). The microleakage values between the DMSO-irrigated and controls did not reach statistical significances.

DISCUSSION

Regardless of the final irrigant and the sealer used, all but two samples (97% of the samples) had at least some leakage. This is in accordance with several other studies (31, 34, 35). Since the groups with different final irrigation regimen did not show statistically significant differences in the immediate microleakage within the two sealers, the hypothesis that DMSO or CHX irrigation would not affect immediate sealing capacity was accepted. However, final irrigation with DMSO caused significantly less microleakage than CHX irrigation did for both sealers in 18-month-aged samples. Therefore, the hypothesis regarding the effects after aging was partially rejected. CHX demonstrated the worst leakage after 18 months for both sealers. The plausible explanation for this could be the increased wettability caused by DMSO (26, 36).

In general, the 18-month storage did not increase the microleakage. These results support the impression that tight

root filling will minimize the leakage, and the leakage will not increase in time. It also indicates that the degradation of the interface between the sealer and dentin does not affect the seal in a way that has been observed with composite adhesives (30). Previous studies have shown CHX to significantly improve the longevity of composite adhesive bonding to dentin (16, 37, 38). It may also at least moderately improve the initial post adhesion to dentin when composite resin cements are used (17). However, in this study with sealers, the final irrigation with CHX resulted with the highest microleakage score in the 18-month-aged samples with both sealers. The finding indicates that the effect of CHX on inhibition of dentin endogenous enzymes is probably not as important with sealers as it is with adhesives. The reason for this can only be speculated at this point. Because EDTA, which was used before the experimental irrigants, is a chelator and exposes the collagen in dentin surface, the degradation of the exposed collagen by endogenous enzymes present also in root dentin (13, 14) is expected. The reason may be the difference between the natures of the interface. Composite adhesive bonding, including self-etch adhesives, relies on the penetration of the primer/adhesive monomers between the exposed collagen fibers and the mechanical interlocking of collagen and polymerized adhesive (39, 40), while the sealers rely on close contact with the dentin surface and dentinal tubule penetration. The importance of the sealer penetration to dentinal tubules may rely on the relief of shrinkage stress of the material (35). Even though RealSeal SE has been claimed to have self-etching properties, which should further expose dentin collagen during the application of the sealer, it might not be aggressive enough to achieve true dentin bonding (41).

A good wettability of sealers to the root canal dentin is prerequisite for a good and tight seal (42). CHX has been indicated to improve wettability of both dentin (43) and gutta percha (44). DMSO is known to increase surface free energy and thus improve wettability (36) also in dentin (26). These effects may have some significance because both RealSeal SE and Topseal with both irrigation agents had slightly (but not significantly) lower immediate microleakage than controls. However, in aged samples, CHX had the highest while DMSO had the lowest microleakage scores. The findings do not indicate that simply increasing the wettability the better seal would be achieved.

CONCLUSION

Although the amount of leakage in this study was very small, we cannot assume that these obturations would have totally inhibited the bacterial invasion in time. CHX had the worst long-term results with (10) both sealers, so the use of CHX as final irrigant (Basrani et al. 2002) should perhaps be reconsidered in clinical setting. Further research should concentrate to develop materials that allow reproducible creation of impermeable root canal obturations. For example, incorporation of DMSO into the sealers could be investigated.

Disclosures

Clinical significance: Even though the leakage was small, 97% of the obturations had at least some leakage regardless of the final irrigant used. Material development should concentrate even more to improve the consistency and tightness of the obturation.

Acknowledgment: The study was financially supported by the Academy of Finland (No 256990) and The Finnish Association of Women Dentists. We thank Jukka Inkeri and the staff of Biomedicum laboratory for technical help as well as Student Health Care Organization of Tampere, Oulu, and Helsinki for the supply of extracted third molars. We also thank the importers and manufacturers for providing the obturation materials.

Conflict of interest: The authors declare that they have no conflict of interest.

Ethics Committee Approval: A total of 120 human third molars extracted as a part of normal treatment in the University Student Health Care Centre in Tampere and Oulu, Finland, were used for the study with the patients' consent and approval from the Ethical Committee, Faculty of Medicine, University of Oulu.

Financial Disclosure: The study was financially supported by the Academy of Finland (No 256990) and The Finnish Association of Women Dentists.

Authorship contributions: Concept – R.M.L., L.T.; Design – R.M.L., L.T., P.K.V., L.V.J.L.; Supervision – L.T., P.K.V.; Fundings – L.T., P.K.V., L.V.J.L.; Materials – R.M.L., L.T.; Data collection &/or processing – R.M.L., L.T., P.K.V., L.V.J.L.; Analysis and/or interpretation – R.M.L., L.T.; Literature search – R.M.L., L.T.; Writing – R.M.L.; Critical Review – L.T., P.K.V., L.V.J.L.

REFERENCES

- Gillen BM, Looney SW, Gu LS, Loushine BA, Weller RN, Loushine RJ, et al. Impact of the quality of coronal restoration versus the quality of root canal fillings on success of root canal treatment: a systematic review and meta-analysis. *J Endod* 2011; 37(7):895–902. [CrossRef]
- Mamootil K, Messer HH. Penetration of dentinal tubules by endodontic sealer cements in extracted teeth and in vivo. *Int Endod J* 2007; 40(11):873–81. [CrossRef]
- Jardine AP, Rosa RA, Santini MF, Wagner M, Só MV, Kuga MC, et al. The effect of final irrigation on the penetrability of an epoxy resin-based sealer into dentinal tubules: a confocal microscopy study. *Clin Oral Investig* 2016; 20(1):117–23. [CrossRef]
- Alcalde MP, Bramante CM, Vivan RR, Amoroso-Silva PA, Andrade FB, Duarte MAH. Intradentinal antimicrobial action and filling quality promoted by ultrasonic agitation of epoxy resin-based sealer in endodontic obturation. *J Appl Oral Sci* 2017; 25(6):641–9. [CrossRef]
- Ørstavik D, Nordahl I, Tibballs JE. Dimensional change following setting of root canal sealer materials. *Dent Mater* 2001; 17(6):512–9. [CrossRef]
- Fisher MA, Berzins DW, Bahcall JK. An in vitro comparison of bond strength of various obturation materials to root canal dentin using a push-out test design. *J Endod* 2007; 33(7):856–8. [CrossRef]
- Babb BR, Loushine RJ, Bryan TE, Ames JM, Causey MS, Kim J, et al. Bonding of self-adhesive (self-etching) root canal sealers to radicular dentin. *J Endod* 2009; 35(4):578–82. [CrossRef]
- Schwartz RS. Adhesive dentistry and endodontics. Part 2: bonding in the root canal system—the promise and the problems: a review. *J Endod* 2006(12);32:1125–34. [CrossRef]
- Neelakantan P, Subbarao C, Subbarao CV, De-Deus G, Zehnder M. The impact of root dentine conditioning on sealing ability and push-out bond strength of an epoxy resin root canal sealer. *Int Endod J* 2011; 44(6):491–8. [CrossRef]
- Basrani B, Santos JM, Tjäderhane L, Grad H, Gorduysus O, Huang J, et al. Substantive antimicrobial activity in chlorhexidine-treated human root dentin. *Oral Surg Oral Med Oral Pathol Oral Radiol Endod* 2002; 94(2):240–5. [CrossRef]
- Basrani B, Tjäderhane L, Santos JM, Pascon E, Grad H, Lawrence HP, et al. Efficacy of chlorhexidine- and calcium hydroxide-containing medicaments against *Enterococcus faecalis* in vitro. *Oral Surg Oral Med Oral Pathol Oral Radiol Endod* 2003; 96(5):618–24. [CrossRef]
- Basrani B, Lemonie C. Chlorhexidine gluconate. *Aust Endod J* 2005; 31(2):48–52. [CrossRef]
- Santos J, Carrilho M, Tervahartiala T, Sorsa T, Breschi L, Mazzoni A, et al. Determination of matrix metalloproteinases in human radicular dentin. *J Endod* 2009; 35(5):686–9. [CrossRef]
- Tay FR, Pashley DH, Loushine RJ, Weller RN, Monticelli F, Osorio R. Self-etching adhesives increase collagenolytic activity in radicular dentin. *J Endod* 2006; 32(9):862–8. [CrossRef]
- Pashley DH, Tay FR, Imazato S. How to increase the durability of resin-dentin bonds. *Compend Contin Educ Dent* 2011; 32(7):60–4.
- Tjäderhane L. Dentin bonding: can we make it last? *Oper Dent* 2015; 40(1):4–18. [CrossRef]
- Lindblad RM, Lassila LV, Salo V, Vallittu PK, Tjäderhane L. Effect of chlorhexidine on initial adhesion of fiber-reinforced post to root canal. *J Dent* 2010; 38(10):796–801. [CrossRef]
- Shafie F, Memarpour M. Effect of chlorhexidine application on long-term shear bond strength of resin cements to dentin. *J Prosthodont Res* 2010; 54(4):153–8. [CrossRef]
- Cecchin D, de Almeida JF, Gomes BP, Zaia AA, Ferraz CC. Effect of chlorhexidine and ethanol on the durability of the adhesion of the fiber post re-lined with resin composite to the root canal. *J Endod* 2011; 37(5):678–83.
- Lindblad RM, Lassila LV, Salo V, Vallittu PK, Tjäderhane L. One year effect of chlorhexidine on bonding of fibre-reinforced composite root canal post to dentine. *J Dent* 2012; 40(9):718–22. [CrossRef]
- Bodrumlu E, Parlak E, Bodrumlu EH. The effect of irrigation solutions on the apical sealing ability in different root canal sealers. *Braz Oral Res* 2010; 24(2):165–9. [CrossRef]
- Sharifian MR, Shokouhinejad N, Aligholi M, Jafari Z. Effect of chlorhexidine on coronal microleakage from root canals obturated with Resilon/Epiphany Self-Etch. *J Oral Sci* 2010; 52(1):83–7. [CrossRef]
- Marren K. Dimethyl sulfoxide: an effective penetration enhancer for topical administration of NSAIDs. *Phys Sportsmed* 2011; 39(3):75–82. [CrossRef]
- Stape TH, Tezvergil-Mutluay A, Mutluay MM, Martins LR, do Prado RL, Pizi EC, et al. Influence of dimethyl sulfoxide used as a solvent on the physical properties and long-term dentin bonding of hydrophilic resins. *J Mech Behav Biomed Mater* 2016;64:220–8. [CrossRef]
- Tjäderhane L, Mehtälä P, Scaffa P, Vidal C, Pääkkönen V, Breschi L, et al. The effect of dimethyl sulfoxide (DMSO) on dentin bonding and nanoleakage of etch-and-rinse adhesives. *Dent Mater* 2013; 29(10):1055–62. [CrossRef]
- Mehtälä P, Agee K, Breschi L, Pashley DH, Tjäderhane L. Proprietary solvent enhances wettability. (Abstr. No. 25). *Dental Materials* 2010; 26(Suppl 1):e12–3. [CrossRef]
- Stape THS, Tjäderhane L, Marques MR, Aguiar FHB, Martins LRM. Effect of dimethyl sulfoxide wet-bonding technique on hybrid layer quality and dentin bond strength. *Dental Materials* 2015; 31(6):676–83. [CrossRef]
- Hülsmann M, Heckendorff M, Lennon A. Chelating agents in root canal treatment: mode of action and indications for their use. *Int Endod J* 2003; 36(12):810–30. [CrossRef]
- Tezvergil-Mutluay A, Agee KA, Hoshika T, Carrilho M, Breschi L, Tjäderhane L, et al. The requirement of zinc and calcium ions for functional MMP activity in demineralized dentin matrices. *Dent Mater* 2010; 26(11):1059–67.
- Tjäderhane L, Nascimento FD, Breschi L, Mazzoni A, Tersariol IL, Geraldini S, et al. Strategies to prevent hydrolytic degradation of the hybrid layer-A review. *Dent Mater* 2013; 29(10):999–1011. [CrossRef]
- Bouillaguet S, Shaw L, Barthelemy J, Krejci I, Wataha JC. Long-term sealing ability of Pulp Canal Sealer, AH-Plus, GuttaFlow and Epiphany. *Int Endod J* 2008; 41(3):219–26. [CrossRef]
- Raina R, Loushine RJ, Weller RN, Tay FR, Pashley DH. Evaluation of the quality of the apical seal in Resilon/Epiphany and Gutta-Percha/AH Plus-filled root canals by using a fluid filtration approach. *J Endod* 2007; 33(8):944–7. [CrossRef]
- Jack RM, Goodell GG. In vitro comparison of coronal microleakage between Resilon alone and gutta-percha with a glass-ionomer intraorifice barrier using a fluid filtration model. *J Endod* 2008; 34(6):718–20. [CrossRef]
- Kim YK, Grandini S, Ames JM, Gu LS, Kim SK, Pashley DH, et al. Critical review on methacrylate resin-based root canal sealers. *J Endod* 2010; 36(3):383–99. [CrossRef]
- Li GH, Niu LN, Zhang W, Olsen M, De-Deus G, Eid AA, et al. Ability of new obturation materials to improve the seal of the root canal system: a review. *Acta Biomater* 2014; 10(3):1050–63. [CrossRef]
- Redón R, Vázquez-Olmos A, Mata-Zamora ME, Ordóñez-Medrano A, Rivera-Torres F, Saniger JM. Contact angle studies on anodic porous alumina. *J Colloid Interface Sci* 2005; 287(2):664–70. [CrossRef]
- Carrilho MR, Carvalho RM, de Goes MF, di Hipólito V, Geraldini S, Tay FR, et al. Chlorhexidine preserves dentin bond in vitro. *J Dent Res* 2007; 86(1):90–4. [CrossRef]
- Carrilho MR, Geraldini S, Tay F, de Goes MF, Carvalho RM, Tjäderhane L, et al. In vivo preservation of the hybrid layer by chlorhexidine. *J Dent Res* 2007; 86(6):529–33. [CrossRef]
- Pashley DH, Tay FR, Breschi L, Tjäderhane L, Carvalho RM, Carrilho M, et al. State of the art etch-and-rinse adhesives. *Dent Mater* 2011; 27(1):1–16.

40. Van Meerbeek B, Yoshihara K, Yoshida Y, Mine A, De Munck J, Van Landuyt KL. State of the art of self-etch adhesives. *Dent Mater* 2011; 27(1):17–28.
41. Kim YK, Mai S, Haycock JR, Kim SK, Loushine RJ, Pashley DH, et al. The self-etching potential of RealSeal versus RealSeal SE. *J Endod* 2009; 35(9):1264–9. [\[CrossRef\]](#)
42. Ballal NV, Tweeny A, Khechen K, Prabhu KN, Satyanarayan, Tay FR. Wettability of root canal sealers on intraradicular dentine treated with different irrigating solutions. *J Dent* 2013; 41(6):556–60. [\[CrossRef\]](#)
43. de Assis DF, Prado Md, Simão RA. Evaluation of the interaction between endodontic sealers and dentin treated with different irrigant solutions. *J Endod* 2011; 37(11):1550–2. [\[CrossRef\]](#)
44. Prado M, de Assis DF, Gomes BP, Simão RA. Effect of disinfectant solutions on the surface free energy and wettability of filling material. *J Endod* 2011; 37(7):980–2. [\[CrossRef\]](#)